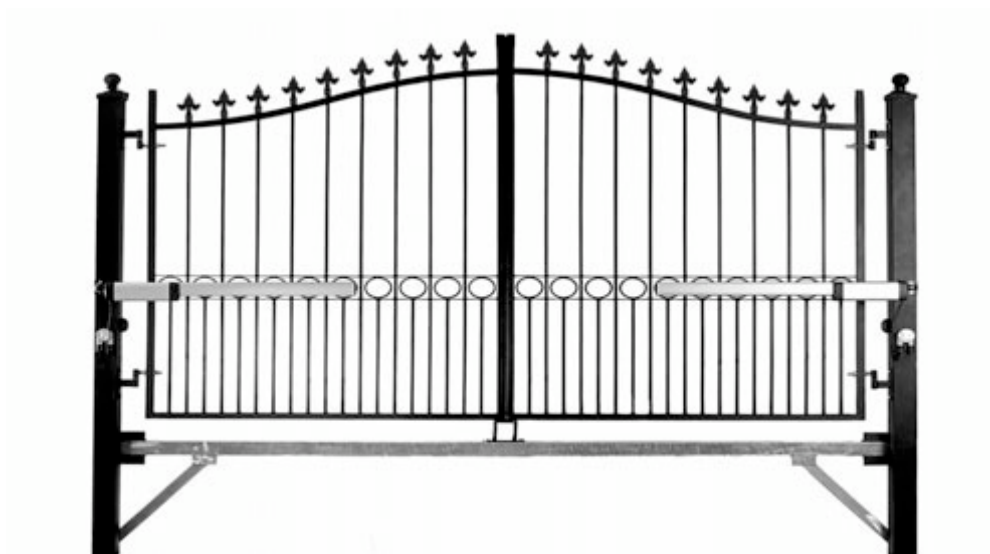


# Electric Gate Kits



## Gates & Gate Post Kit Assembly

### Check list on delivery:

Your gates and post kit should arrive as 3 separate packages:

**1 x Pair of Gates** – Very heavy cardboard wrapped package approx 1800mm square containing 2 gates

**1 x Post Kit** – Heavy cardboard wrapped package approx 2700mm x 250mm containing Posts, Brackets, Hinges, Centre Gate Stop and Fasteners.

**1 x Cross Member** – Unwrapped galvanised box section length with size marked in paint and smaller upper cross member inside (held to end with zip tie)

### Tools required for assembly:

- 1 x 22mm Spanner (or large adjustable spanner)
- 1 x Large adjustable spanner (2 required in no 22mm above)
- 1 x 17mm Spanner or socket
- 1 x 13mm Spanner or socket
- 1 x Small cross head screw driver (for photo cells)
- 1 x Small flat blade screwdriver (for junction boxes)
- 1 x Spirit level
- 1 x Small “touch up” paint brush

**Please read through these instructions fully before you commence assembly  
Refer to photos and diagrams for each of the points below.**

**Assembling the Gates:**

1. Make sure you have all three packages detailed on page 1.
2. Carefully unwrap the post kit taking care not to damage the paint finish when separating the posts and brackets within.
3. Lay out all of the brackets, hinges, closed gate stop and fasteners contained within the post kits package and identify all the parts against the diagrams & photos' within these instructions. (N.B. The junction boxes are supplied with the automation kit).
4. Remove the top cross member from within the galvanised box section lower cross member (**A**). (This is a smaller section length)
5. Bolt the lower cross member '**A**' to the gate posts on the angled brackets below ground level using 4 x Dome headed 100mm long coach bolts, nuts and washers. (Do not tighten fully). Make sure the Cross member is the right way up – *Brackets face down / Threaded holes in centre for gate stop face up.* **See PHOTO's A & G**
6. Bolt the 2 x cross member braces '**B**' diagonally between the hole at the bottom of the post and the bracket on the underside of the cross member using 4 x 17mm bolts and nuts. (Do not tighten fully). **See PHOTO B**
7. Now tighten all fasteners to make structure rigid.
8. Bolt the centre gate stop '**C**' to the upper side of the lower cross member in the middle, using 2 x 17mm bolts and washers. (Study the pictures / diagrams and make sure it is the right way round). It should stop the gates when they are aligned squarely within the hinges across the entrance. **See PHOTO C & DIAGRAM J**
9. Bolt the 2 x lower hinges '**D**' (pins facing up) to the gate posts using 6 x 17mm bolts and washers. These fit to the pre-threaded brass inserts set in a triangular pattern on the post. **See PHOTO D**

10. Temporarily bolt the 2 x top hinges 'E' (pins facing down) to the posts using 6 x 17mm bolts and washers. **See PHOTO E.** (The top hinges are used to locate the upper cross member during installation)

For accurate spacing of the posts during installation the temporary upper cross member spans the downward facing pins of the top hinges. This cross member is held in place with zip ties (supplied) whilst the concrete hardens.

11. The lower cross member 'A' is your cable duct and carries all the cables across the entrance. Make sure the required cables (Operator / Photo cell etc..) and protective conduits are in place (and long enough) before the post kit is set in concrete.

The photo cell cable\* loops from the cross member 'A' back in to the gate post **See PHOTO F** and out at the photo mounting point 'H'. The operator cable exits the cross member (A) and runs to a junction box mounted on the back of the post **See PHOTO G.**

**N.B.** Cables exiting the lower cross member should be protected with a suitable flexible conduit below ground level.

12. Fix the Operator mounting brackets 'I' to the rear of the gate posts using 8 x 13mm bolts and washers. Ensure they are the right way round. **See PHOTO I**

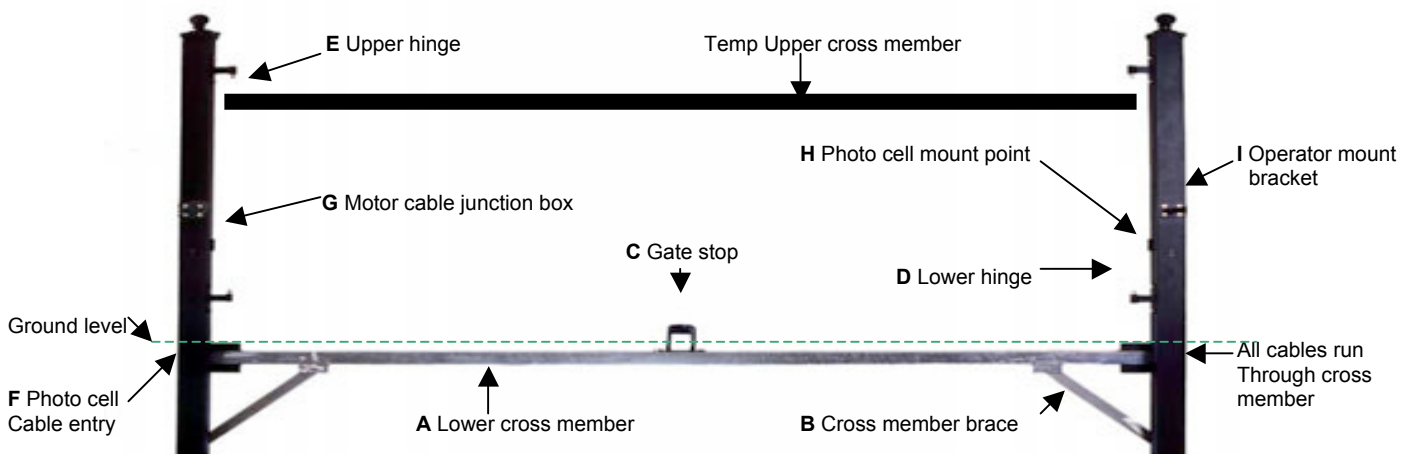


PHOTO A



PHOTO B



PHOTO C



PHOTO D



PHOTO E



PHOTO F



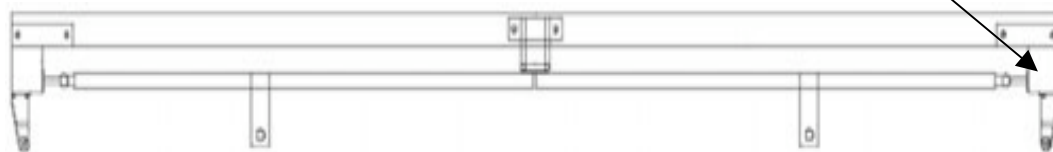
PHOTO G



PHOTO I



Forked bracket aligns with outside edge of post

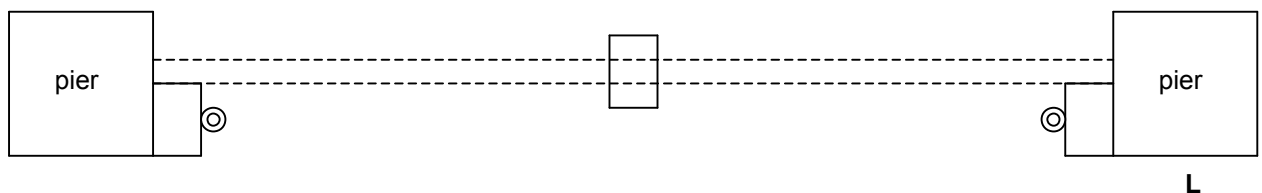
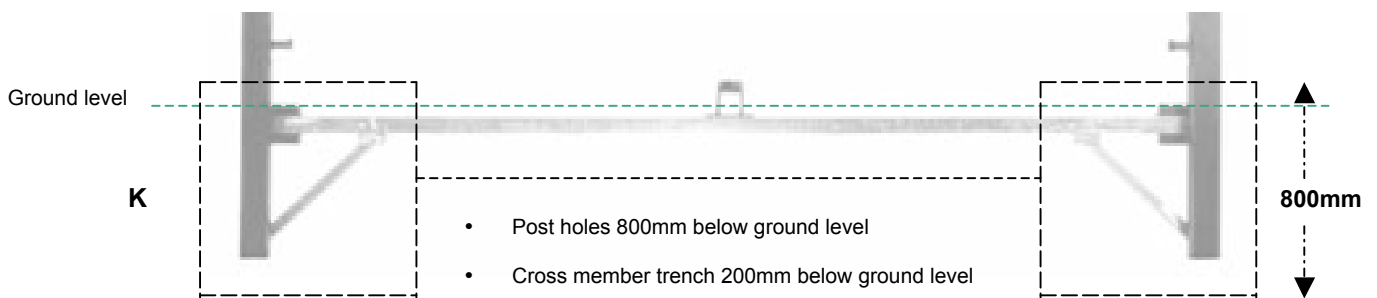


J. Plan of Post Kit & Gates assembled – From above.

13. Fit the upper cross member across the downward facing upper hinge pins and zip tie in place to keep the posts accurately spaced during installation.
14. Measure the full width of your post kit (e.g. *The outside measurement of a 3600mm kit is 3800mm*) and excavate **two 800mm deep holes** each side of the entrance the correct distance apart.

These two holes should be connected by a **200mm deep trench** that will run in front of the gate posts to accommodate the lower cross member.

(See PLAN of post kit diagram **J** at the bottom of page 4 and elevation **K** shown below)



**N.B.** If the posts are set between brick piers make sure there is room to accommodate the gate operators with the gates in the open position. It is recommended that the posts are set in line with the rear face of piers to allow opening of the gates. (As diagram **L** above)

15. Set the post kit in the excavated holes. Use a long spirit level to check all horizontal and vertical planes are true and back fill with concrete. (*Make sure your cables are in place and well above the surface of the finished concrete level – refer to point 11*)

*Check all round carefully with a spirit level a second time and support posts with struts before concrete is left to harden. **Wait 24 hours before the gates are hung.***

16. After 24 hours remove the top cross member and remove both top hinges from the posts.

17. Study photos **D** (lower hinge) and **E** (upper hinge) before fixing the hinge cups to the gates. Each hinge cup requires 2 x 22mm nuts and washers.
- N.B.** The lower hinge cups face downwards to fit the upward facing hinge pins on the posts.  
The upper hinge cups face upward to fit the downward facing hinge pins on the posts.  
This hinge layout avoids the gates being lifted off their hinges by undesirables.
18. Slide the upper hinge pins in to the cups you have just fitted and the gates are ready to hang. Locate each gate on to the lower hinge pin and then secure the upper hinge pin to the post with 3 x 17mm bolts and washers.
19. Use the slotted holes fixing the hinge pins to the posts and the threaded bar on the hinge cups to adjust the gates squarely.
20. Use the tough up paint and brush to make good and missing paint or scratches caused during transport, handling and installation.